



6 SQUARE  
CABINETS

5801 Clearwater Drive, Minnetonka, MN 55343 / [www.6squarecabinets.com](http://www.6squarecabinets.com)

# 6 SQUARE CABINETS

## Quarter Sawn Oak

### QUARTER SAWN OAK MATERIAL USAGE

6 Square Cabinets uses quarter sawn and rift sawn oak in the production of the Itasca Toffee door style. The face frame of the cabinet, uses plain sawn oak. This combines the beauty and quality that quarter sawn oak provides, and extends, to our customers a cost reduction by using rift sawn and plain sawn oak materials.

### WHAT IS QUARTER SAWN OAK, RIFT SAWN OAK, PLAIN SAWN OAK?

#### Quarter Sawn Oak



Quarter sawing refers to the method of cutting. A log is split into quarters (hence the name 'quarter sawn') then cut at a 60°-90° diagonal from the center of the log out toward the edge producing a vertical and uniform pattern grain. Quarter sawing also produces marks on the face of the board, revealing distinctive stripes or 'ray flecks' running across the grain that is one of the signatures of quarter sawn oak. 'Ray flecks' may not appear on every board and may not be uniform in number and appearance. Quarter sawn oak is structurally stronger, finer in grain, and is less likely to warp. Quarter sawn lumber is valued more than plain sawn lumber because of the greater amount of time and material that it requires to produce. Plain sawn lumber is much more efficient to produce allowing to cut lumber quicker and produce less waste.

#### Rift Sawn Oak

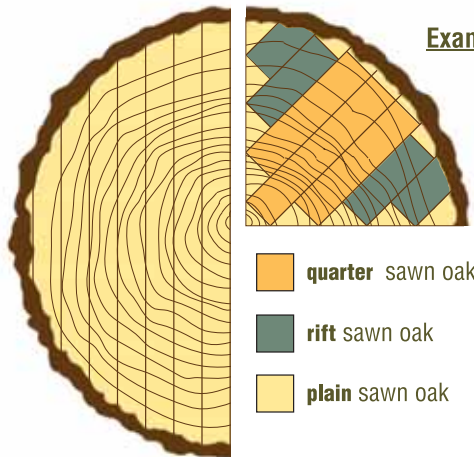


Rift sawn wood applies only to red and white oak and has a straight grain appearance that does not expose 'ray flecks' that quarter sawn oak produces. Rift lumber is lumber whereby the growth rings are 30°- 60° orientation to the board surface which produces a vertical grain that is often mistaken for true quarter sawn. Rift lumber is when the cuts get farther from the center of the segment. Rift sawn is considered less valuable than quarter sawn but more valuable than plain sawn.

#### Plain Sawn Oak



Plain sawn lumber is used in most American oak cabinetry today. Plain sawn lumber has growth rings that are less than 30° orientation to the board surface. This produces a distinct oak grain pattern that is typical in cabinets and less expensive furniture and flooring. Boards are sawn from around the perimeter of the log so the growth rings are essentially parallel with the surface. Plain sawing produces many wide grain patterns that have a pronounced 'cathedral' figure mixed with straighter grain. Plain sawn oak has a coarser, more textured look that draws attention away from the lines of the surface itself.



**Example log cut for Quarter, Rift & Plain sawn lumber.**

